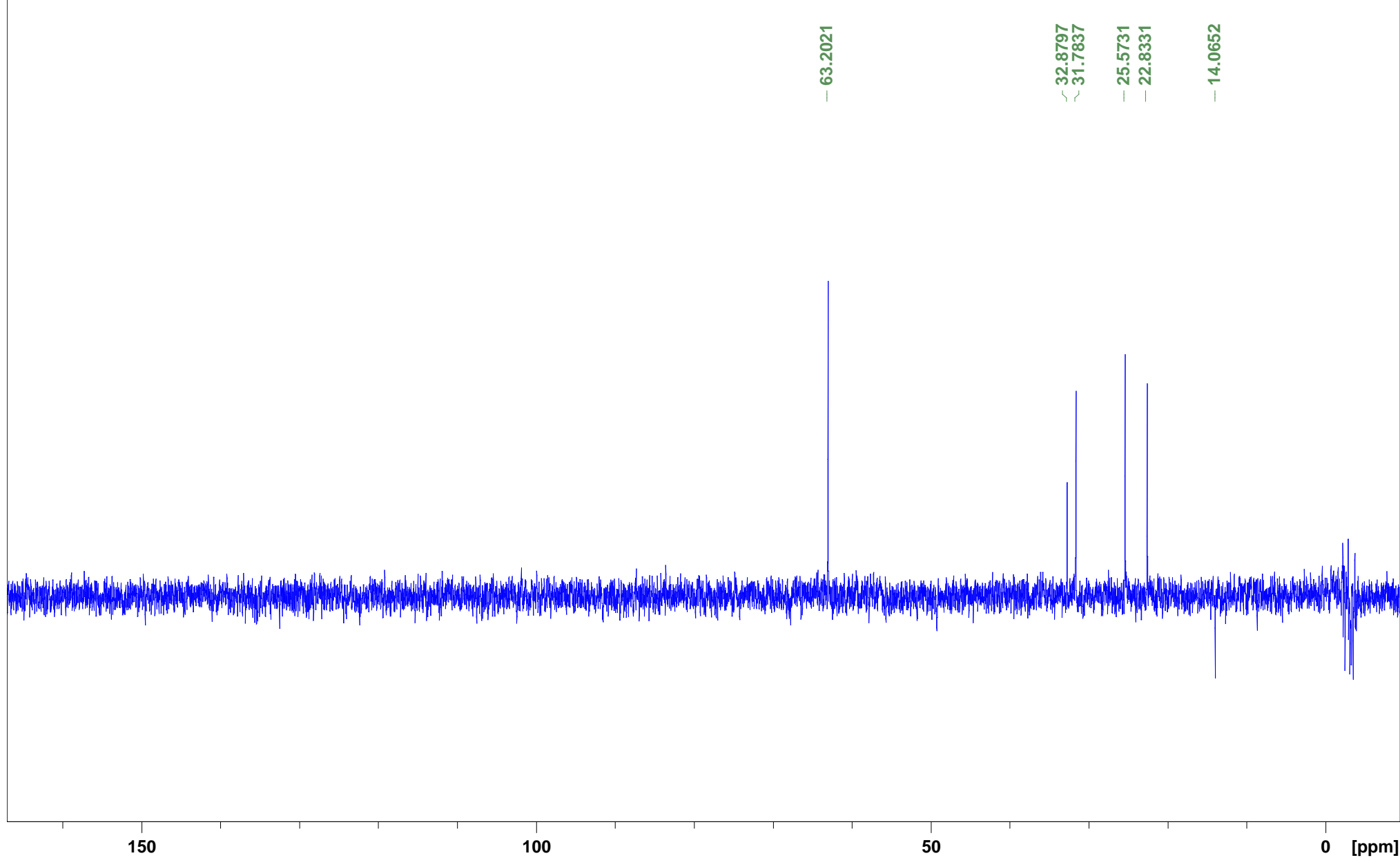


Praktikant/Mitarbeiter Otte

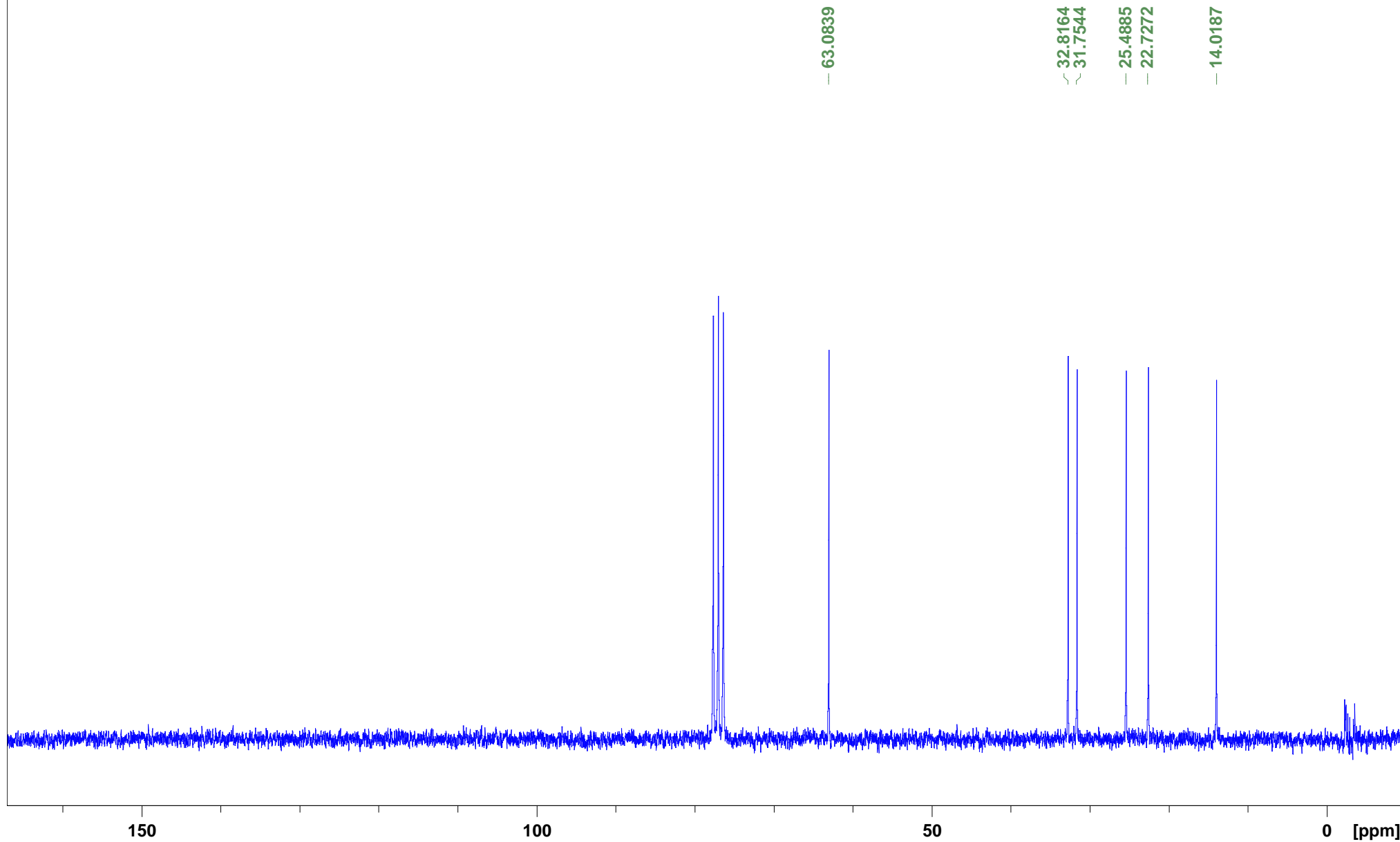
Substanz OCG-14

Menge 18 mg

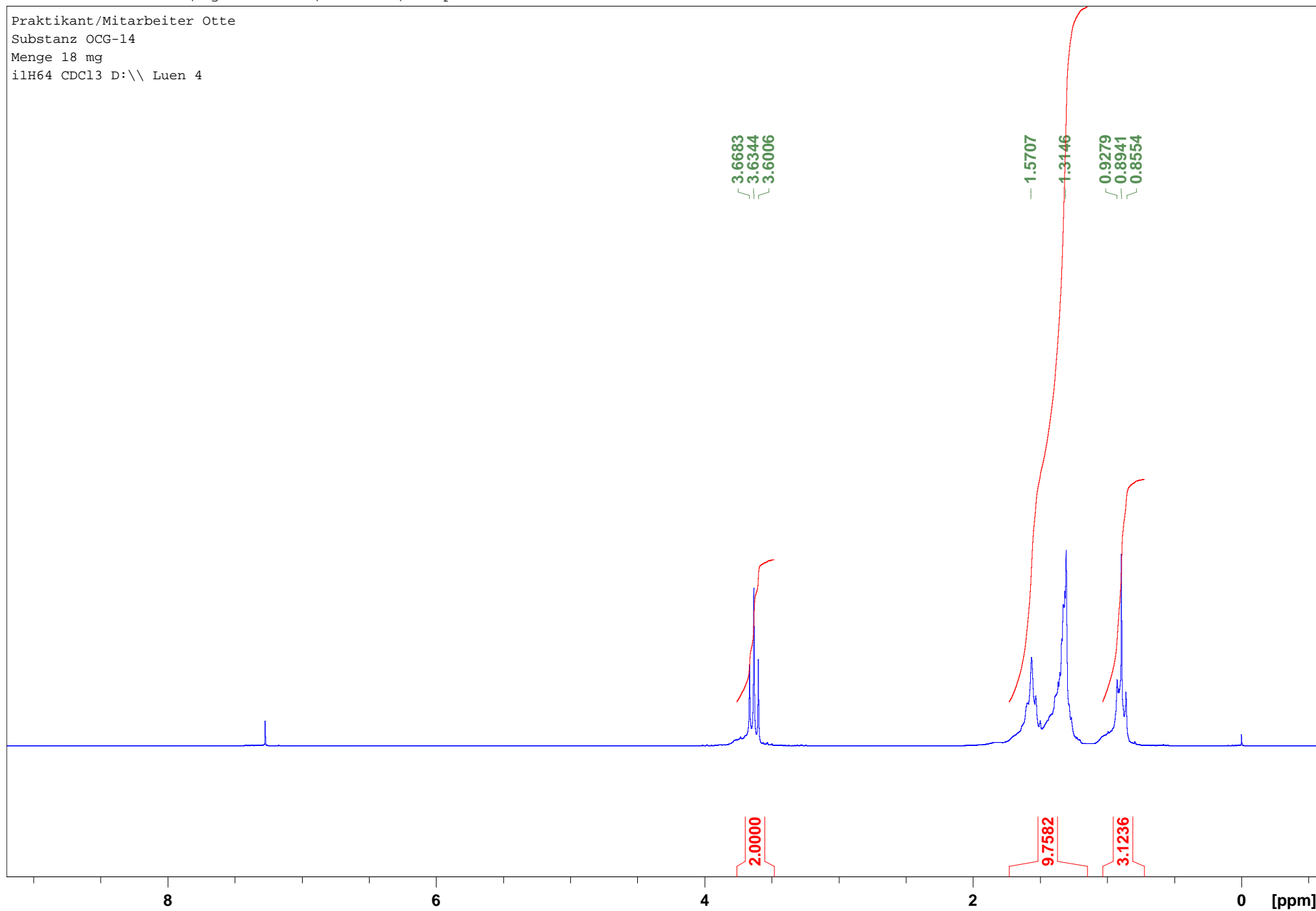
idept CDCl3 D:\ Luen 45



Praktikant/Mitarbeiter Otte
Substanz OCG-14
Menge 18 mg
icpdnplot CDC13 D:\ Luen 45



Praktikant/Mitarbeiter Otte
Substanz OCG-14
Menge 18 mg
ilH64 CDCl3 D:\ Luen 4



Praktikant/Mitarbeiter Otte
Substanz OCG-14
Menge 18 mg
ilH64 CDCl3 D:\ Luen 4

